

LEVEL: MIDBRAIN – INFERIOR COLLICULUS

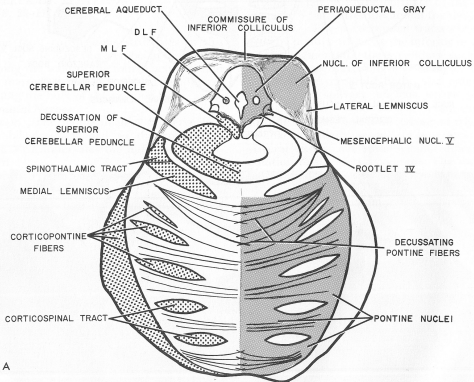
In this section the tectum and tegmentum are from the midbrain and the basilar part is from the pons. The tectum is the inferior collicular nucleus, an important relay station in the auditory pathway. Note the commissure of the inferior colliculus. The fiber bundle streaming up to the inferior border of the inferior colliculus is the lateral lemniscus which consists of secondary and tertiary auditory fibers.

Tegmentum. The dominant feature here

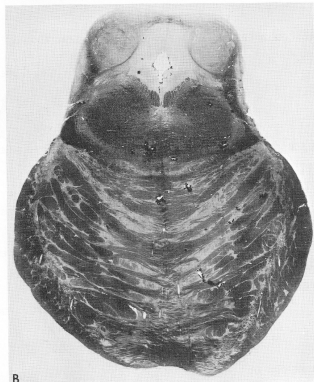
is the superior cerebellar peduncle, which is starting to cross in the anterior portion of the tegmentum. The lateral margin of this region contains, anteriorly and laterally, the definitive medial lemniscus, which has migrated from its medial position in the pons. The medial longitudinal fasciculus (MLF) is conspicuous in the floor of the cerebral aqueduct.

Basis. The middle cerebellar peduncle covers the anterior surface of the midbrain.

Cranial Nerve. The rootlet fibers of nerve IV are seen on the floor of the aqueduct. The mesencephalic root and nucleus of nerve V are found at the lateral margin of the periaqueductal gray.



A



B